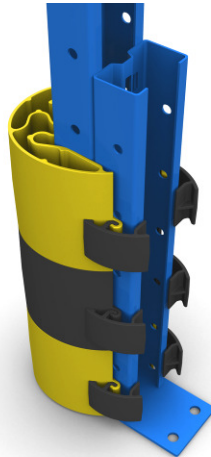


Bulletin 010 - Fitting a Protect-it with clips.



STEP 1

Fit the Protect-it over the column.

Placing the fingers behind the clip prevents finger injury.



STEP 2

Then push the Protect-it until it clips into place.

Be careful not to get your fingers caught



STEP 3

Once the clips are located, slide the Protect-it down until it is in the correct position